



ANTELOPE RIDGE

4400 Shandwick Drive

Antelope, CA 95843

888.266.4610

www.lewisapartments.com

Community Amenities

- ✧ Award winning school district
- ✧ Gated community
- ✧ Fitness center
- ✧ Two pools and two spas
- ✧ Pet friendly with walkways and pet stations
- ✧ Planned activities and events
- ✧ Barbecues and play area
- ✧ Conveniently located near schools, airport, shopping and parks including Antelope sporting facilities
- ✧ Easy access to 80 freeway



Residence Features

- ✧ 1, 2 and 3 bedroom apartment homes
- ✧ Kitchen includes refrigerator, dishwasher, gas range and microwave
- ✧ Maple cabinets
- ✧ In home full size washer and dryer
- ✧ Garages available
- ✧ Private patio or balcony
- ✧ Upgraded interiors
- ✧ Non-smoking buildings available
- ✧ 24 hour emergency maintenance
- ✧ 30-Day Move-in Guarantee*
- ✧ #1 customer service satisfaction award, 7th consecutive year



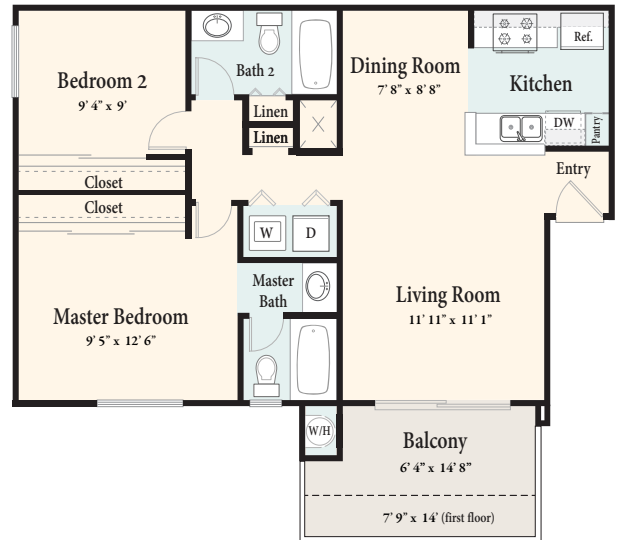
*See Leasing Consultant for details
Features vary by floor plan

The Brighton
1 Bedroom, 1 Bathroom
627 Square Feet



ANTELOPE RIDGE

The Cascade
2 Bedroom, 2 Bathroom
819 Square Feet



The Deerfield
2 Bedroom, 2 Bathroom
899 Square Feet

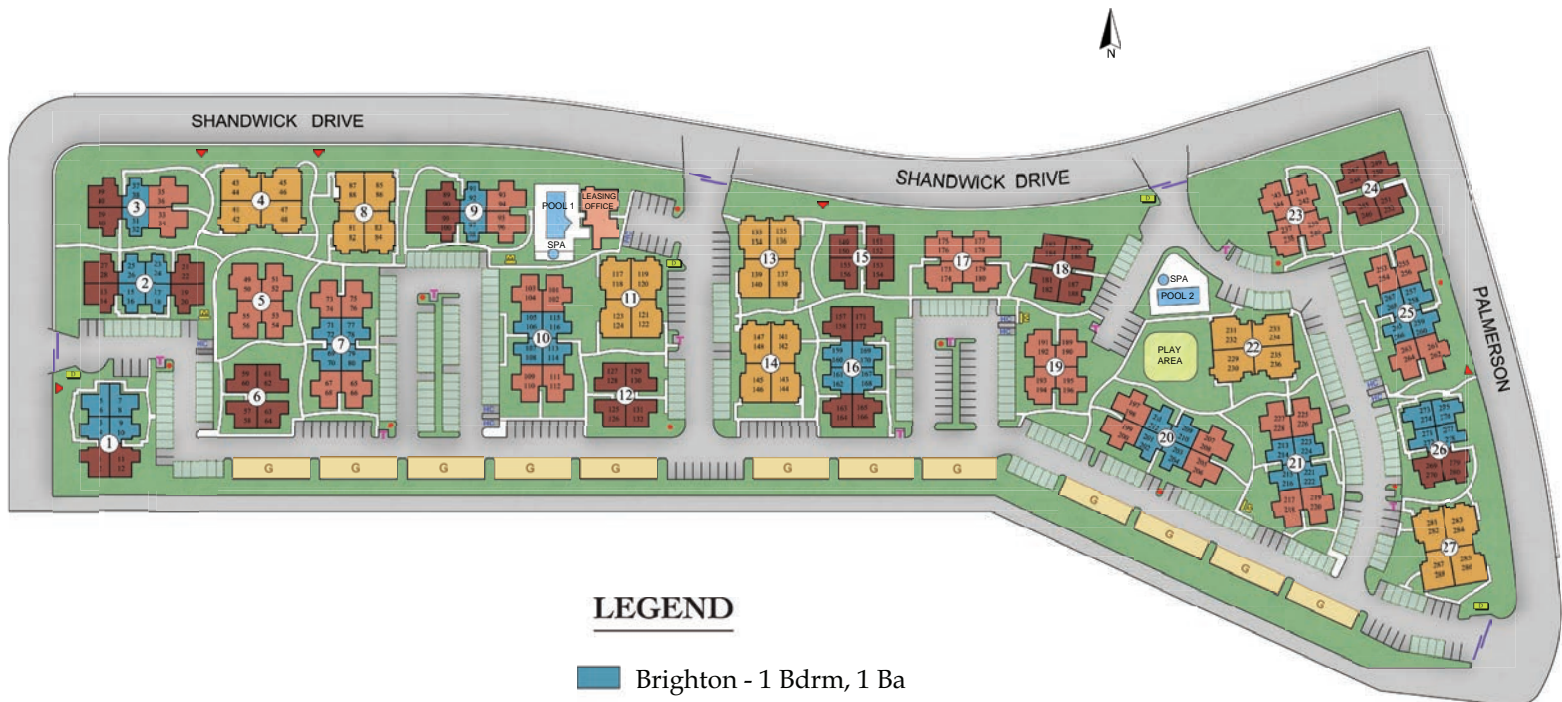


The Everest
3 Bedroom, 2 Bathroom
1,125 Square Feet





ANTELOPE RIDGE



LEGEND

- Brighton - 1 Bdrm, 1 Ba
- Cascade - 2 Bdrm, 1 Ba
- Deerfield - 2 Bdrm, 2 Ba
- Everest - 3 Bdrm, 2 Ba
- Covered Carports
- Trash Enclosure
- Handicap Spots
- Mailboxes
- Fire Hydrants
- Sliding Gates
- Directory
- Pedestrian Entrances
- Garages